

BLOCK ALPHABET LETTERS.

**Lesson by Vanessa Page
Copyright Augachel Pty Ltd - 2002**

**First if you haven't got a drawing program you can download Zoner
Draw 3 for Free from here: <http://www.zoner.com>**

Instructions:

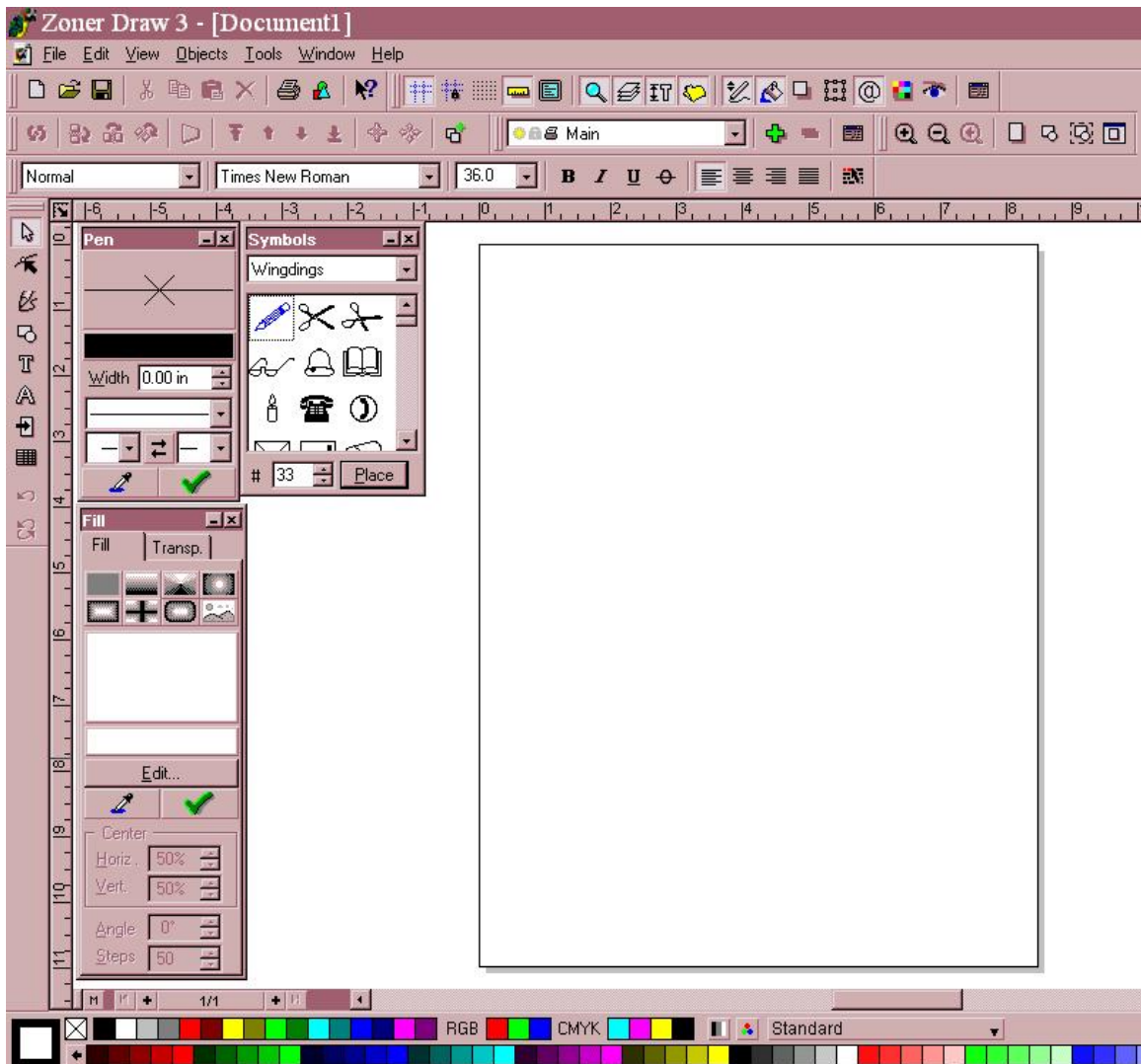
Step 1. Open Zoner and make sure you have these palettes open.

Fill

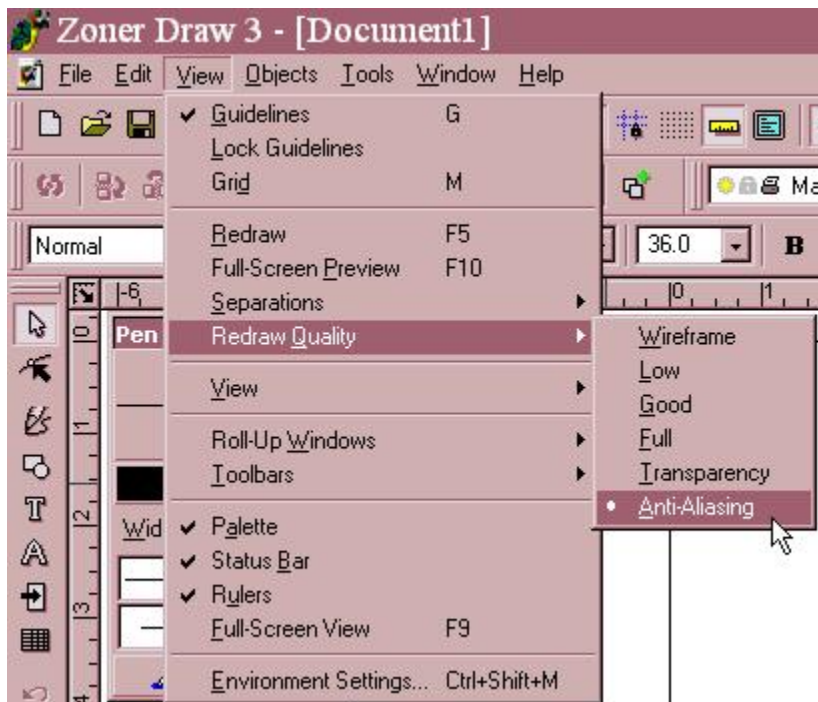
Pen

Symbols

If these aren't showing then go to View - Roll-up Windows and select them.



Also select View-Re - draw quality - Anti-Aliasing

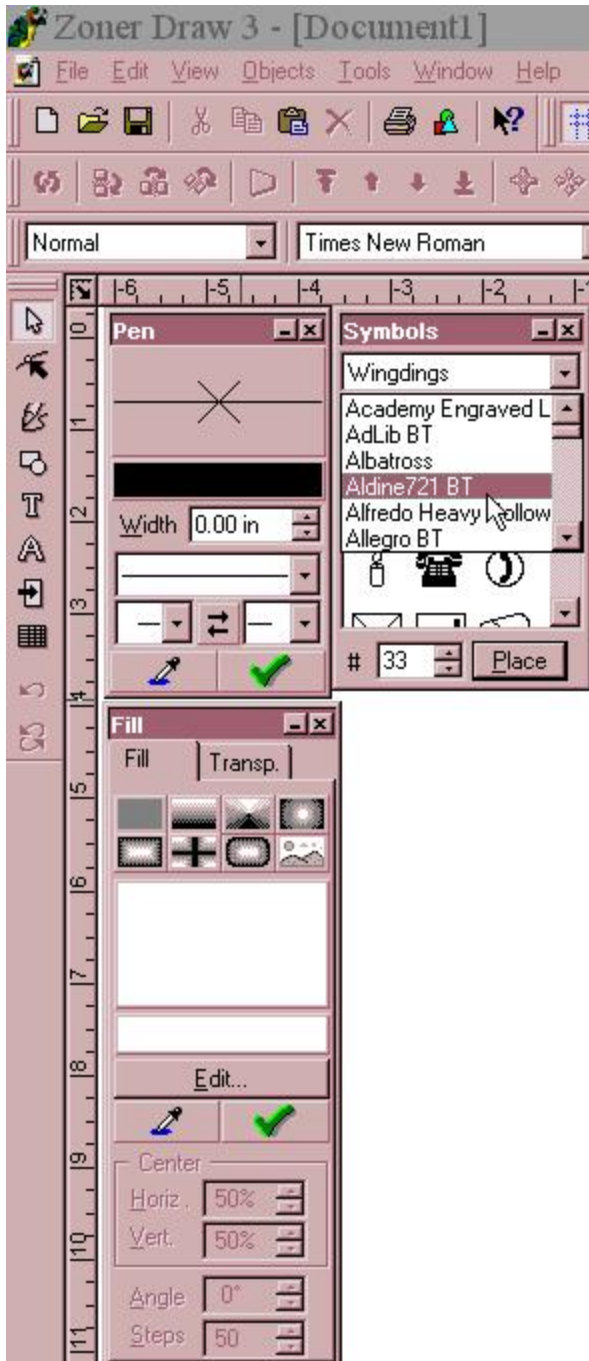


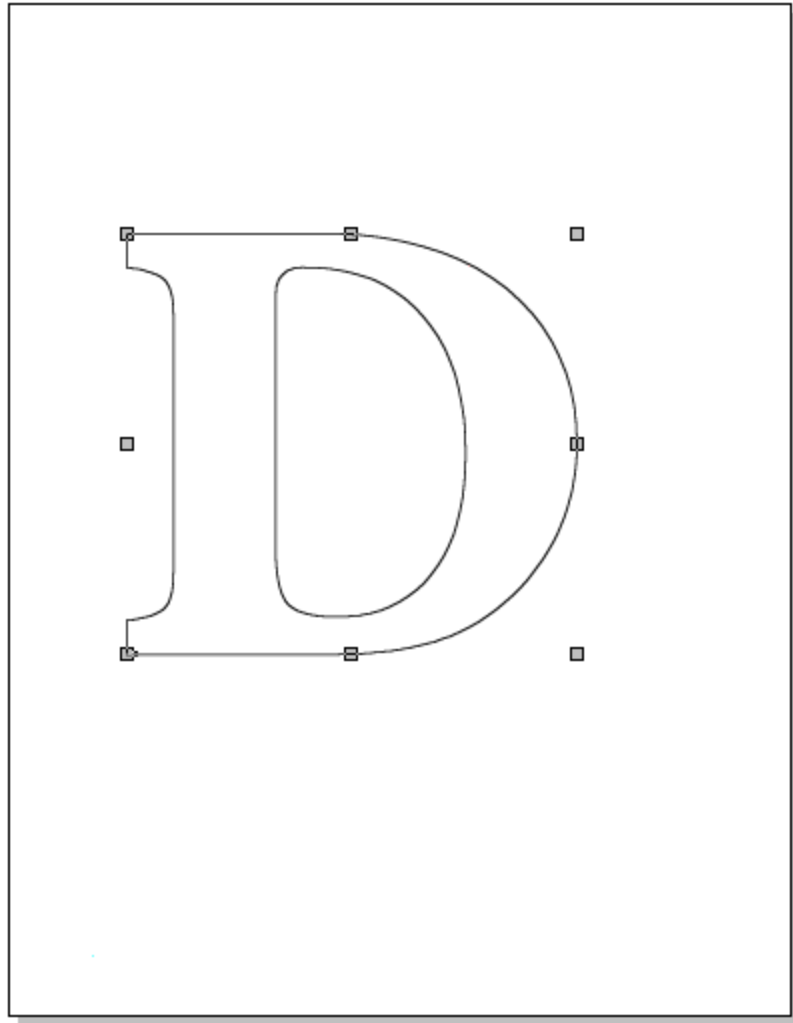
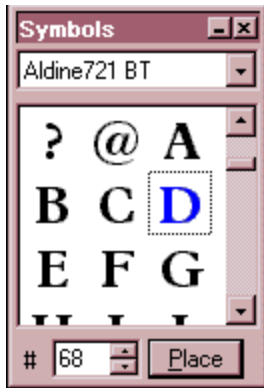
I have also moved some of the menus from the right hand side to the top of the screen, You can just drag and drop them.

Step 2.

On the symbols palette select a font, I chose Aldine 721 BT.

I placed the mouse cursor on the 'D' and dragged it to the work area.





You can change the size of the font by dragging the corners.

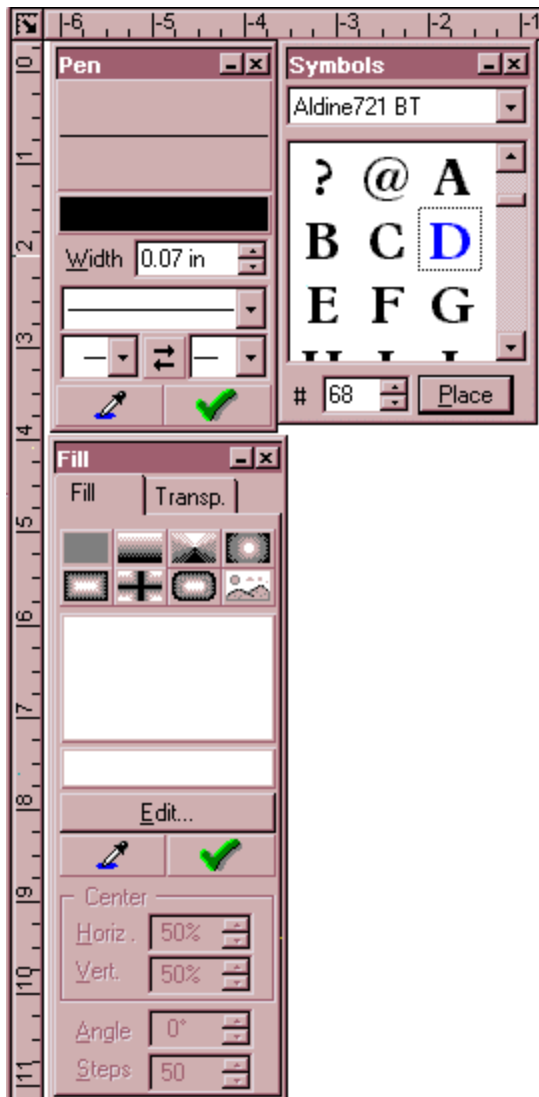
On the Pen palette select:

Black

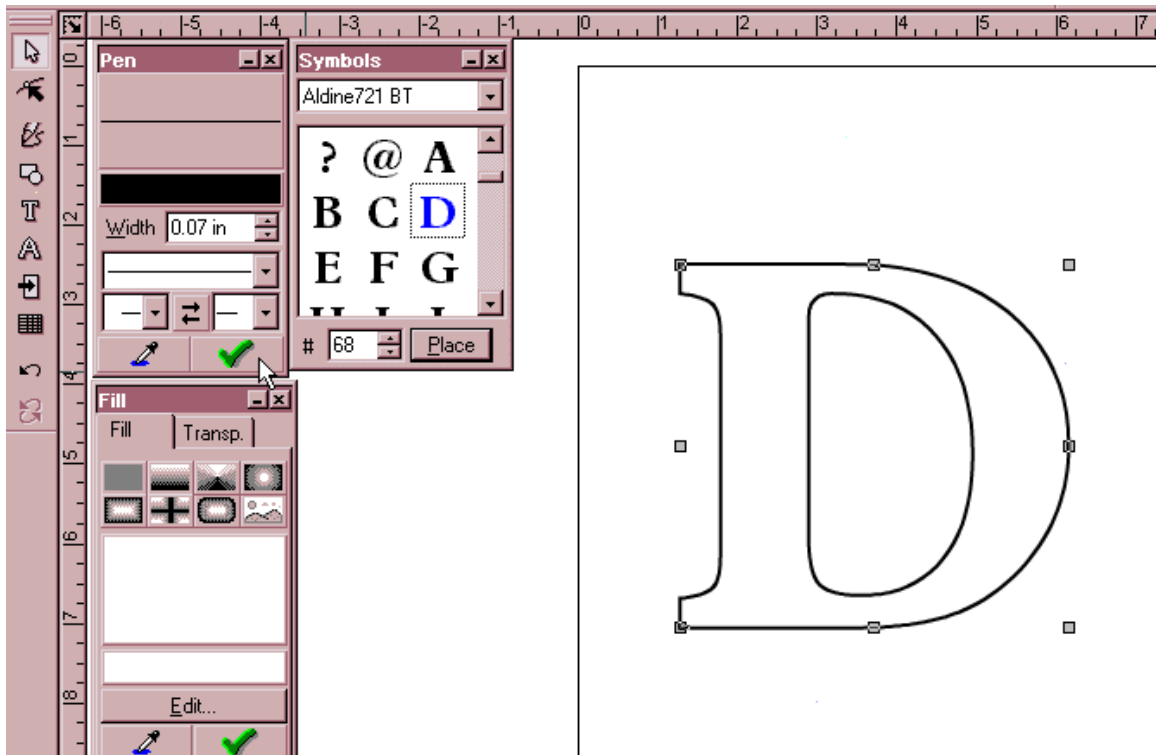
Width - 0.07in

Straight Line

No arrow heads.



Select the 'D' font and then click the check mark and the 'D' lines will thicken.

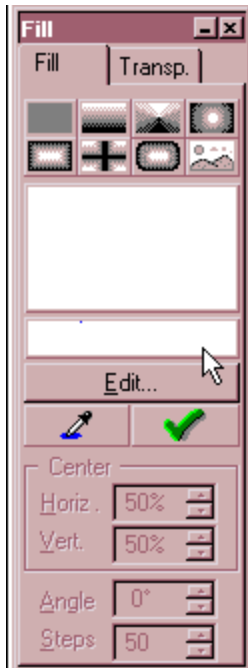


If the 'D' is filled in you need to re-fill with white so all you see is the outline.

On the Fill palette select:

White

and select the 'D' and click the check mark, the 'D' will now show as an outline.

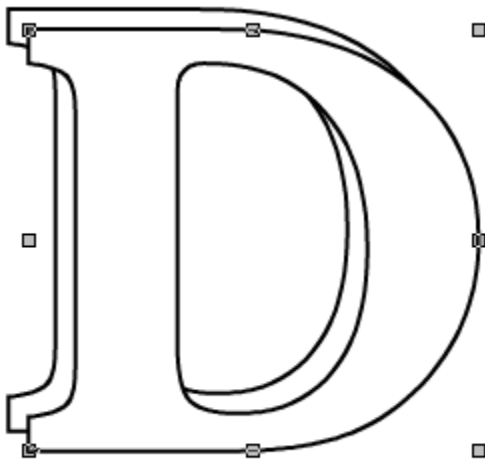


Step 3.

With the 'D' still selected hit the Control+ D keys on your keyboard.

You

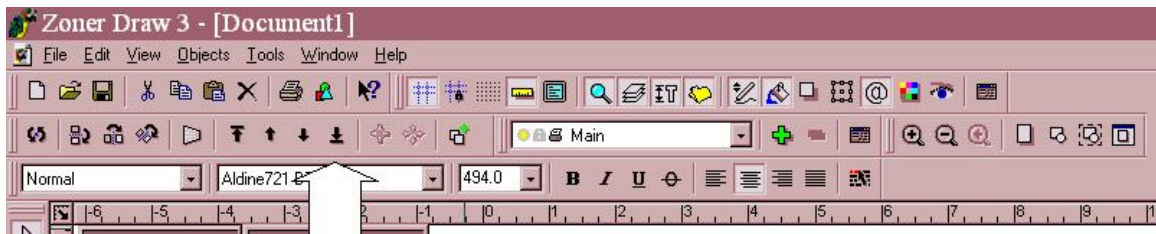
now have another 'D' slightly to one side.



Step 4.

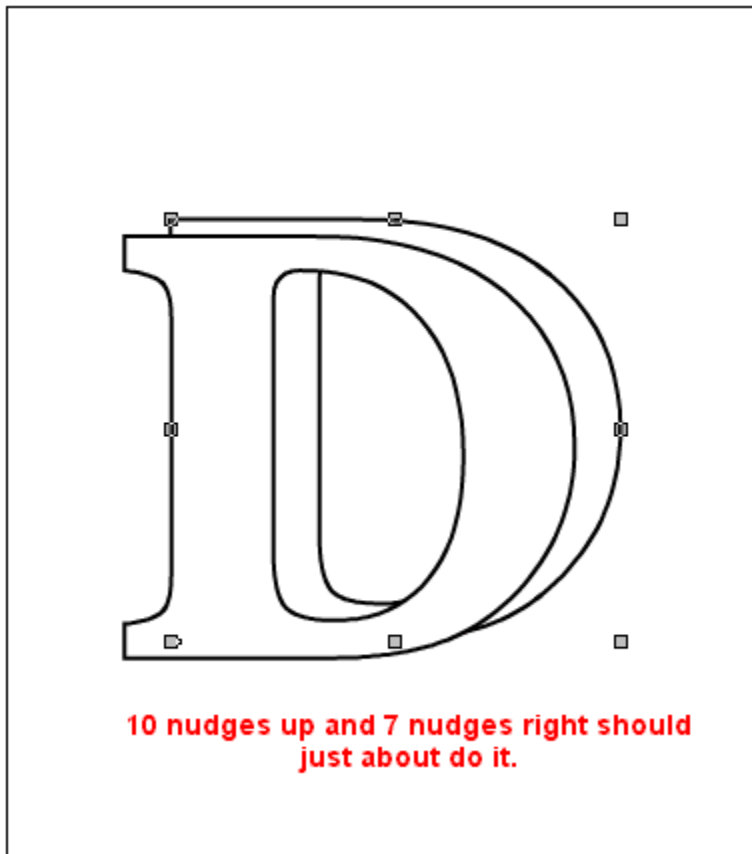
With this letter selected, hit the key at the top of the screen that moves

the top 'D' behind the other 'D' (the arrow key with a line underneath it at the top of the screen).



Step 5.

Using your left - right - up - down keys on your key board will nudge the 'D' to the right and up to get it in the position you need.

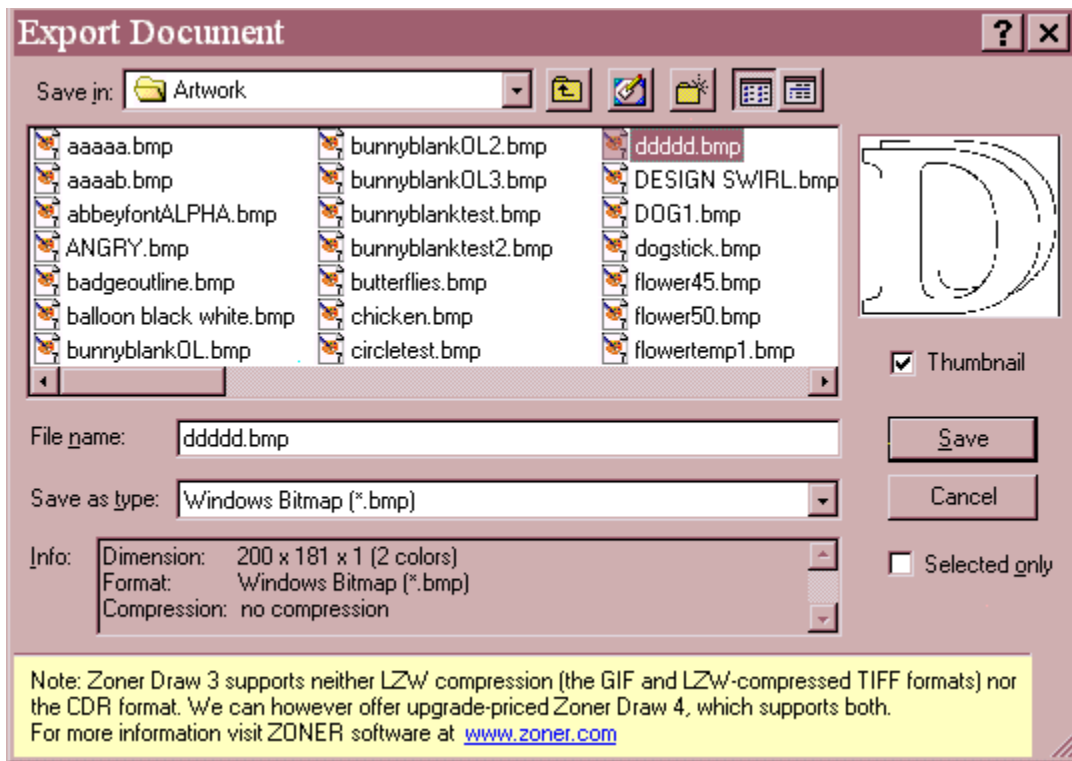


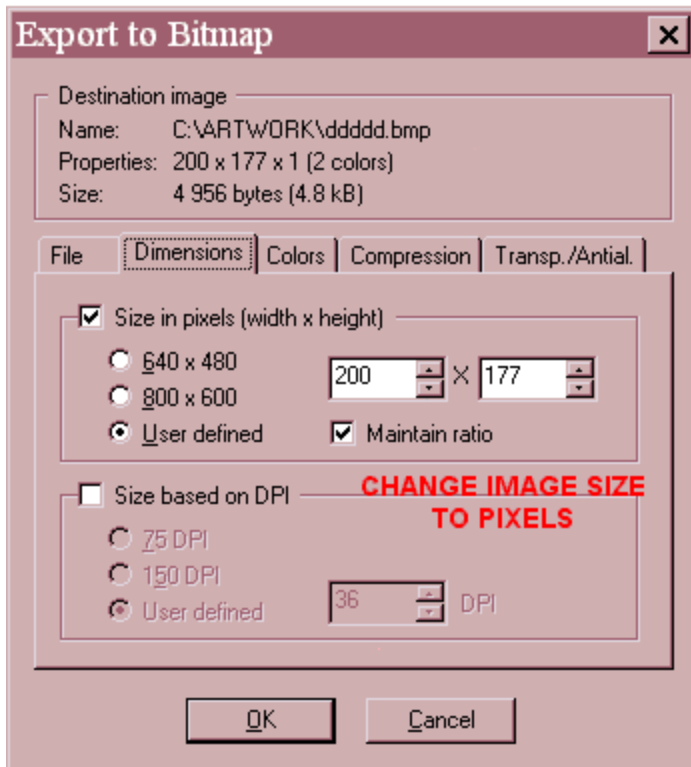
Step6.

When you have the 'D' in the correct position it looks like a blocked letter. (i.e. Baby).

Step 7.

Select **File - Export - BMP** and select the folder you want to save it in.





Now all you need to do is open your digitizing program and fill the design as you want it.

I used PE Design and a programmed fill. I brought the artwork into Design Centre and cleaned it up. You shouldn't have too much to do. You can do a whole word at once if you want to rather than each letter separately.

Have fun.

Vanessa